

Edwin Clifford Family  
1906

Standing in Back: Alfred, Gladys, Charles

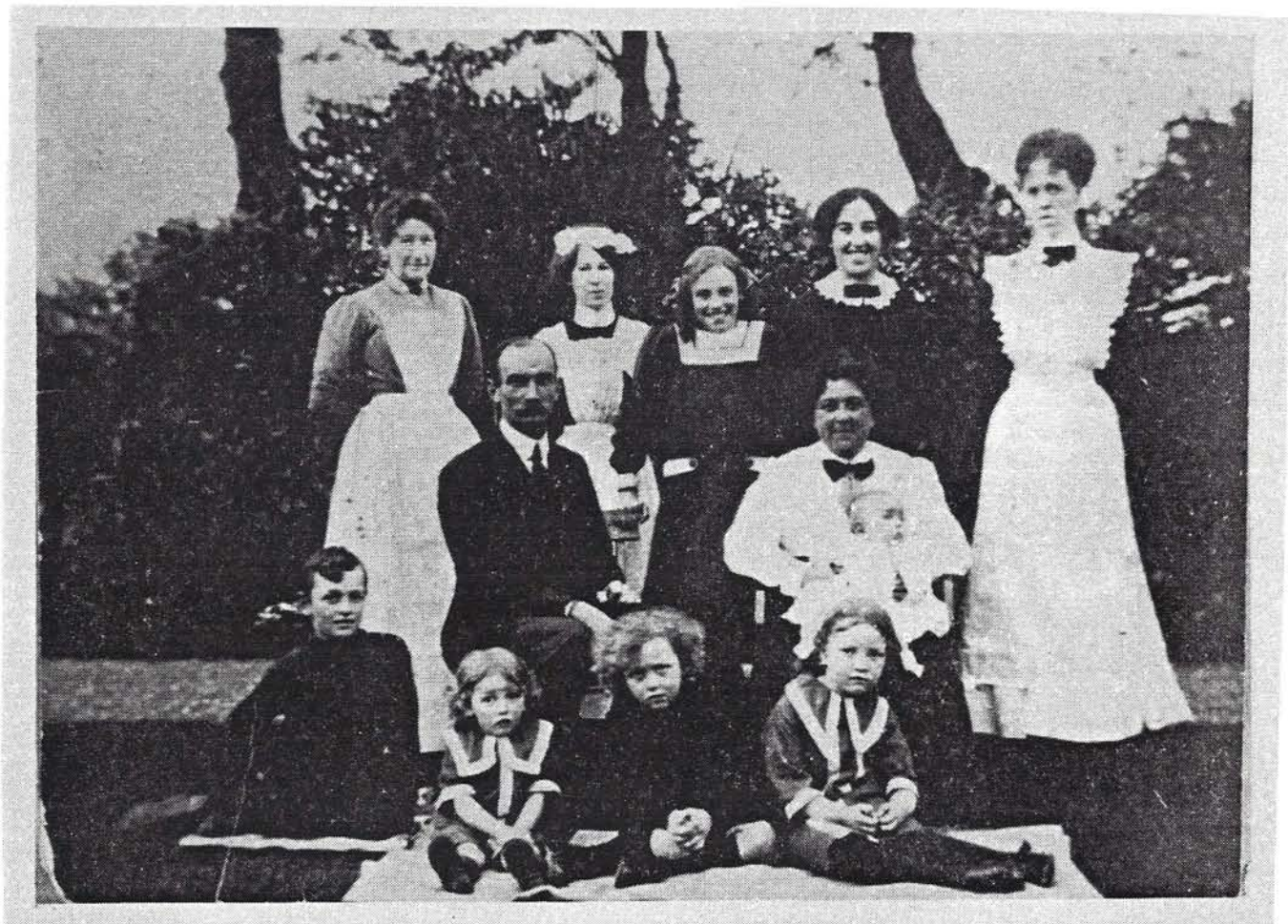
Sitting in Middle: Edwin and Alice Maria

In Front: Edith, Albert, Mabel

Grandma Shorter  
in England. Written  
on the back "with her  
smile"



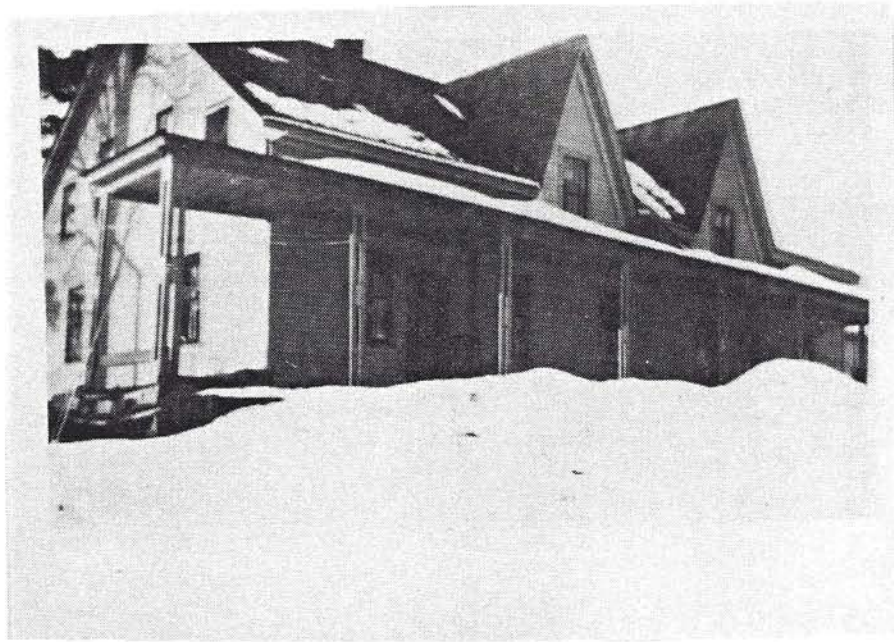




Edwin Clifford Family Farewell at Spearpoint 1913

Standing Between the Maids: Edith and Gladys  
Seated: Edwin and Alice Maria Clifford  
In Front: Albert, Olive, Frank and Mabel  
On Lap: Baby Jack





Clifford farmhouse at Joseph Smith  
birthplace. Torn down about  
1960



Joseph Smith birthplace farm. People  
unknown. Probably taken about 1915





The old farm in Vermont at the Joseph Smith birthplace.  
Probably about 1914 - Fall or Spring  
Gladys holding onto carriage; Jack in carriage; Edwin Clifford  
standing on woodpile; Frank and Alice Maria on top of woodpile  
and Edith standing behind it; Alfred holding onto horse.





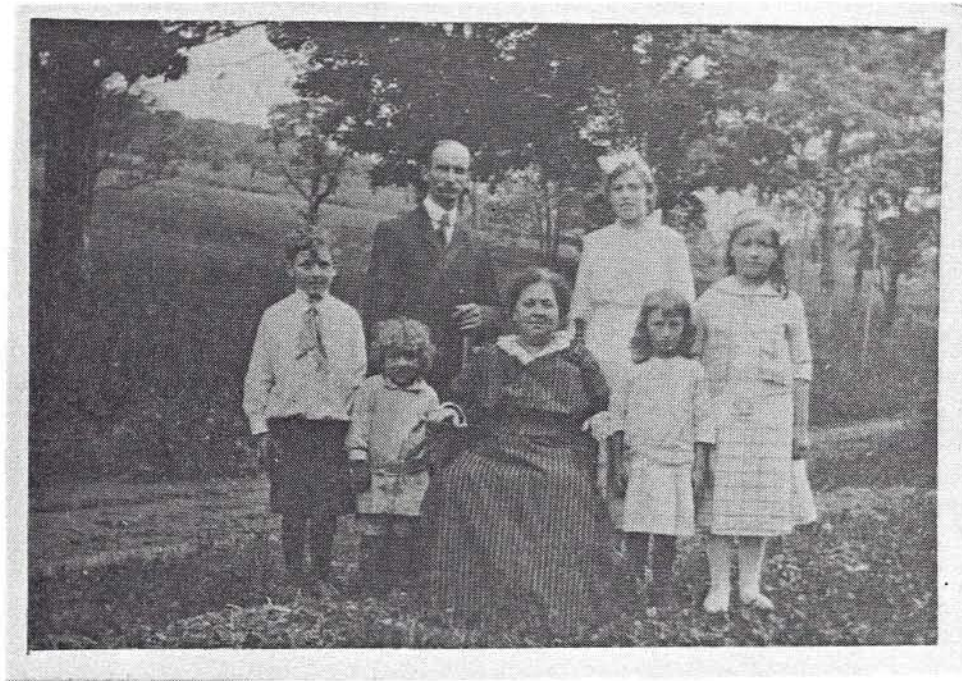
The Edwin Clifford family in Vermont, ca. 1913. This photograph was obtained from Kathie Birch, Hythe, Kent, England in 1979 while visiting with her at the home of another cousin, Nellie Hewitt, in Folkestone. Kathie is a daughter of Lucy Olive Shorter and George Hills. Apparently Gladys Clifford, then about 19 years old sent this photograph (in the form of a postcard) back to her Aunt in England. The following message was written on the back: "Dear Aunt Lucy & Uncle George this is a photo of us going to a large fair at a place called Tunbridge. You can see all of us, with my girlfriend, who is boarding at our house, & the 2 men who work on the farm. See the house in distance & we are beside the cow barns. I guess you can pick us out. Ta Ta XX"





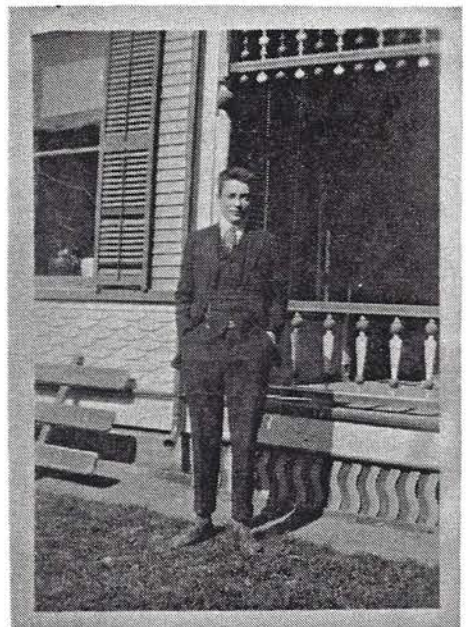
THE JOSEPH SMITH MEMORIAL ABOUT 1920  
Standing left to right: Edwin and Alice Maria Clifford, 4th from right Edith. Second row seated at left: Mabel Clifford. Front row seated: 4th from left Jack, 6th from left Frank, 7th from left Olive. Collie named King was known as the cow catcher.





Taken about 1914 or 1915 on Dairy Hill in Vermont on the road leading to the Joseph Smith birthplace. Standing in back Edwin Clifford and Edith, in front Albert, Frank, Alice Maria, Olive and Mabel

Robert Fales  
Freshman Year, Standing  
by home in South  
Royalton







Freshman Class in South Royalton High School 1921  
Top Row 2nd Left - Robert Fales  
Front Row 6th from left - Mabel Clifford





Mabel Clifford July 1925  
Courting Days, wearing  
Dress of Her Own Making

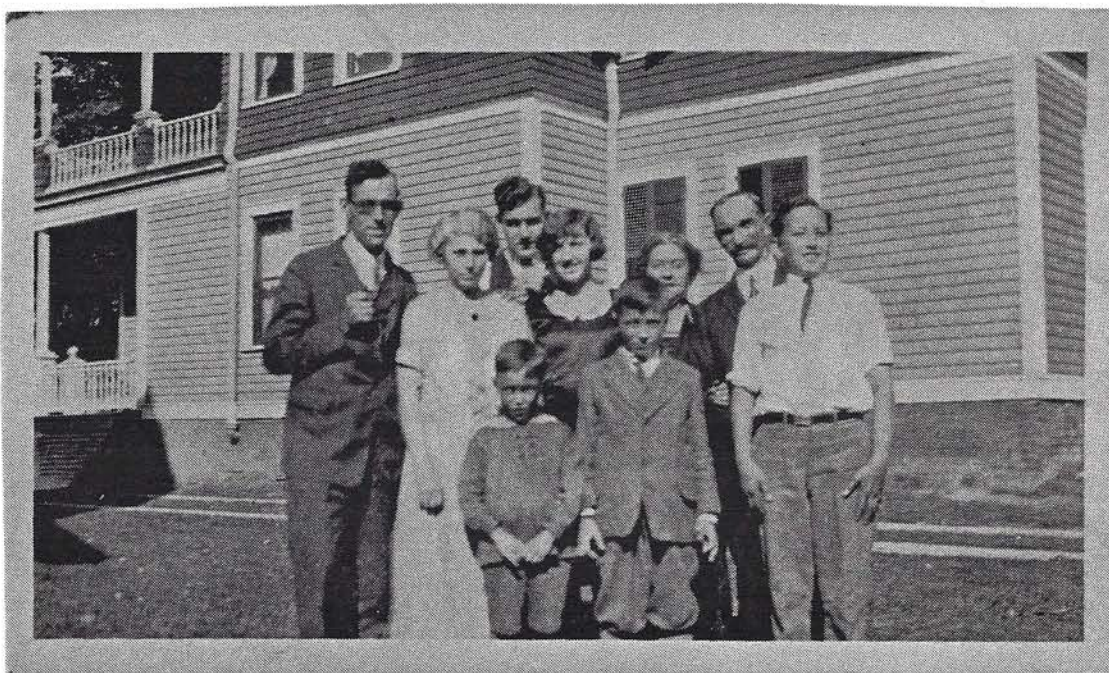


Mabel and Robert  
Courting Days 1925  
Mabel had made own  
Dress. Probably  
taken at 111 Whitmore  
Street

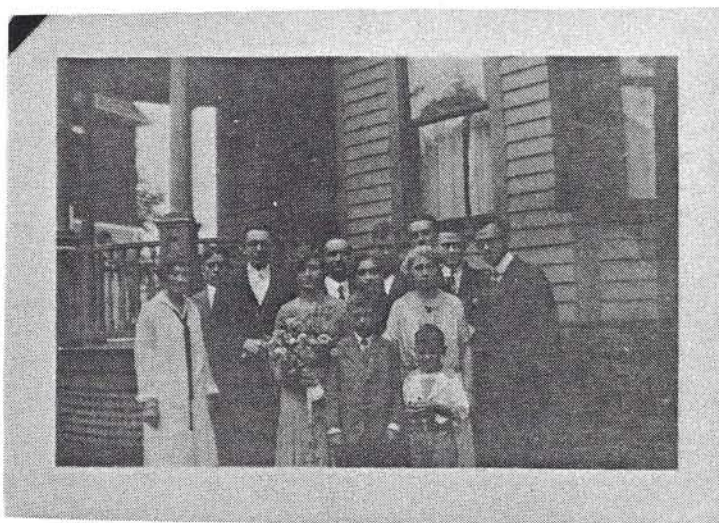


Mabel Clifford  
Park at Hartford, CT  
about 1925





The Edwin Clifford Family, taken at 111 Whitmore St.,  
**Hartford**, Connecticut. Front Row Left to Right:  
Percy and Earl(Charles' sons), and Jack. Second Row  
Left to Right: Charles, his wife Mae, Olive, Edwin,  
and Alice Maria Clifford. Back Row: Frank.

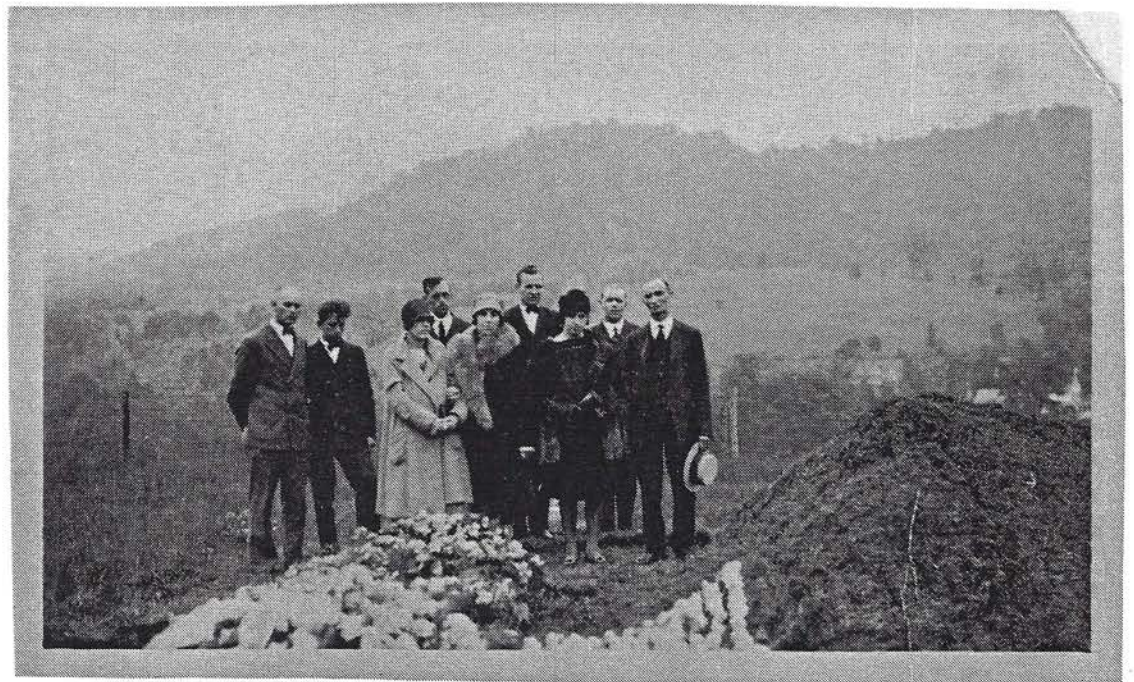


Wedding Party of Robert Sibley and  
Mabel Grace Clifford Fales 2 August  
1926 taken at 111 Whitmore Street.  
Front Row Left to Right: Percy, Earl,  
Jack. Second Row: Charles, Mae, Olive,  
Edwin and Alice Maria. Back Row: Frank



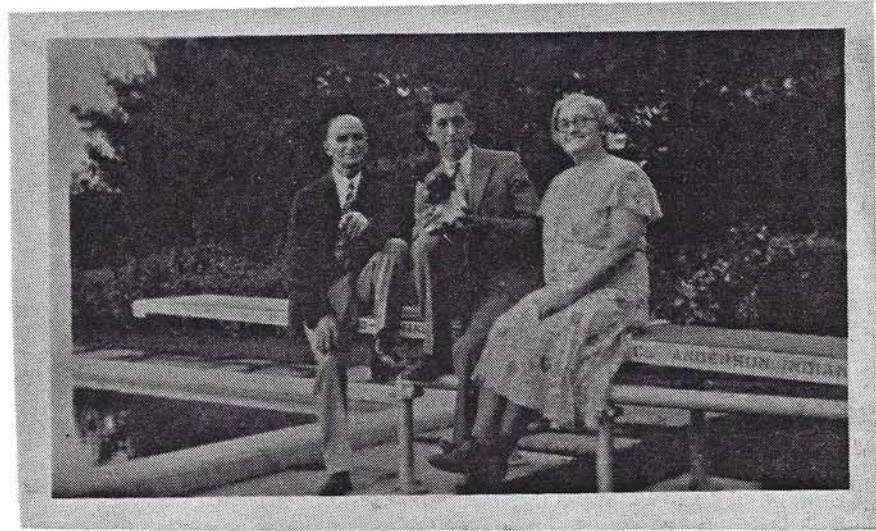


Alice Maria  
and  
Edwin Clifford  
about  
1925

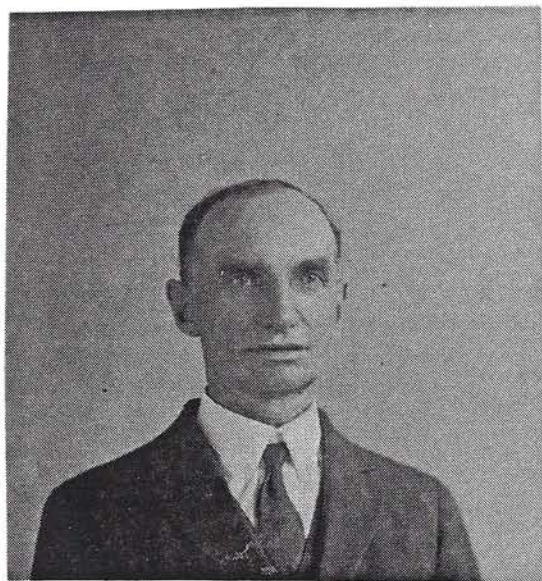


At the Burial of Alice Maria Shorter Clifford in  
South Royalton, Vermont, 9 June 1928. Front Row  
Left to Right: Albert, Jack, Edith, Gladys, Olive,  
Edwin Clifford. Back Row Left to Right: Charles,  
Frank, and Alfred.





Edwin Clifford, Jack Clifford, youngest son  
and Minnie Kitz, Edwin's second wife  
(married 4 May 1929) taken where  
Edwin Clifford worked



Edwin Clifford about 58